

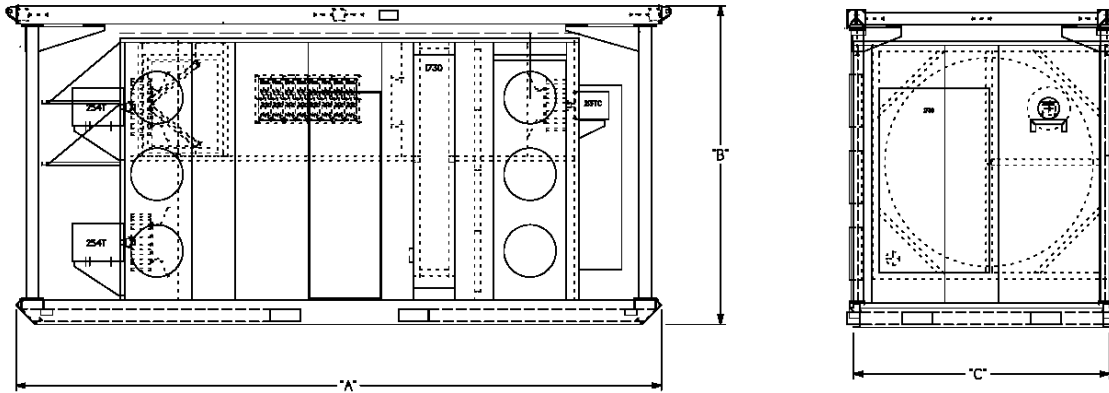


ServiceMaster DSI
 2400 Wisconsin Ave, Downers Grove, IL 60515
 1-800-954-9444
 www.ServiceMasterDSI.com

CONTROLLED DEHUMIDIFICATION

MS-17500/15000-ARID-Dry Units

<u>MODEL</u>	<u>CFM</u>	<u>Fuel Type</u>	<u>"A" Dim.</u>	<u>"B" Dim.</u>	<u>"C" Dim.</u>	<u>Weight</u>
CDH-R-168	17,500/15,000*	Gas or Electric	221"	101"	88"	10,650 lbs
CDH-R-168	17,500/15,000*	Dual	221"	101"	88"	10,650 lbs



Max Air Volume	Moisture Removal Lbs/Hr 80°/60% RH	Moisture Removal Gallons/Day 80°/60% RH	Moisture Removal Lbs/Hr 55°/80% RH	Moisture Removal Gallons/Day 55°/80% RH	Moisture Removal Lbs/Hr 40°/80% RH	Moisture Removal Gallons/Day 40°/80% RH
17,500	442	1,272	368	1,061	252	728

Pipe Size	LP Inlet Pressure	Natural Gas Inlet Pressure	Electric Reactivation FLA Load 230/1/60	Electric Reactivation FLA Load 460/3/60	Gas Reactivation FLA Load 460/3/60	CFH Gas Max Usage NG	Gallon/HR Max Usage LP
1 1/2"	7-14" w.c.	7-14" w.c.	N/A	44	44	1,200	12.7



Available Accessories:

- Remote Humidistat
- Cooling Coil Modules
- Heating Coil Modules
- Trailer Mounting with generators
- (3) 18" or 20" Round Connections

Weights and dimensions subject to change without notice.
 *2" or 5" External Static Pressure.
 **Deduct 2050 lbs for removal of Protective Cage.